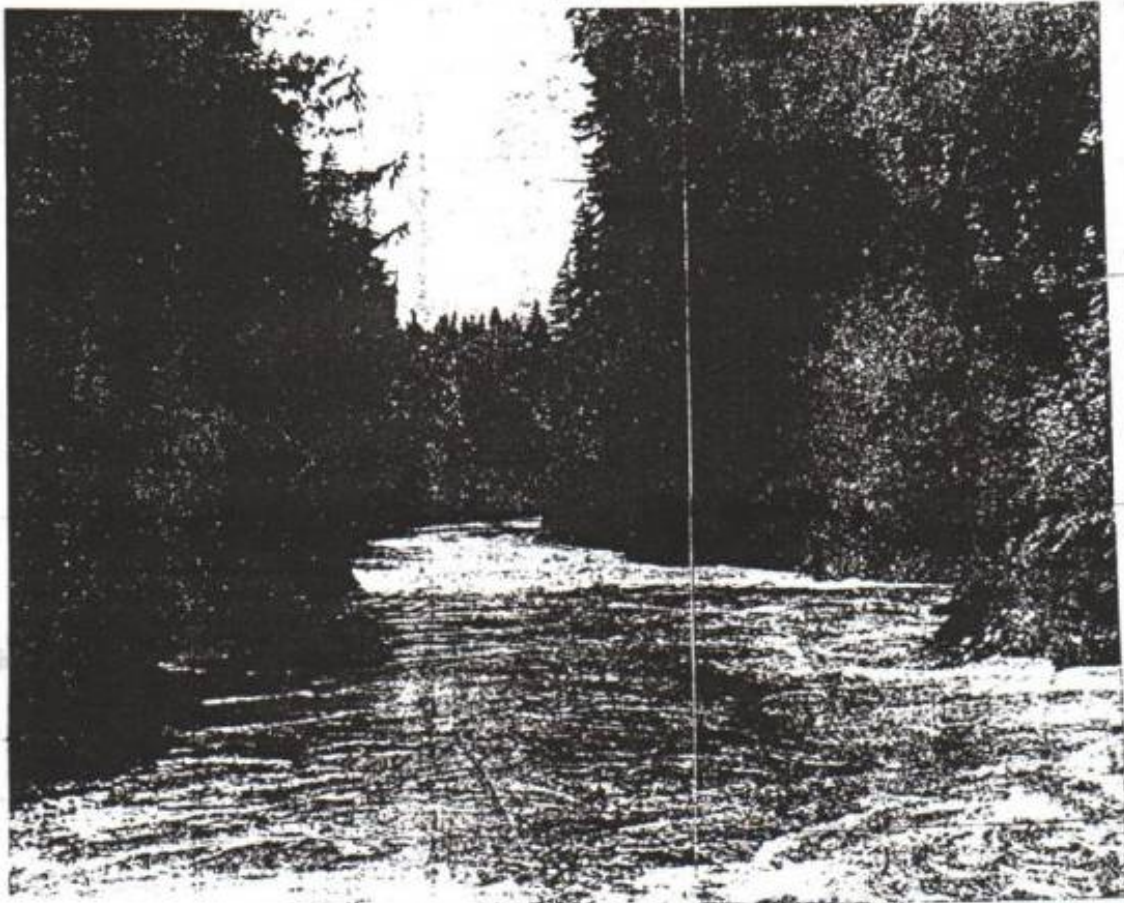


# THE CONCRETE HERALD

Formerly the Hamilton Herald Established Nov. 23, 1901. Oldest Paper in the Upper Skagit.

CONCRETE, SKAGIT COUNTY, WASHINGTON, JUNE 7, 1954. NUMBER 23

## Construction Starts On Upper Baker Dam Project



This is the site of the new Baker River dam, where a 300-foot wall of concrete 1,200 feet long will produce a nine mile lake that will cover and raise present Baker Lake almost fifty feet. You are looking downstream from the actual location of the dam. The site is about a mile and a quarter Southeast of Koma Kulshan guard station on the Baker Lake highway.

“At long last” as royalty once put it, the announcement of the granting of the license for the new Baker River dam was made yesterday by the Federal Power Commission and the Puget Sound Power & Light Company. The news was received rather calmly here due to the fact that it had been so long in the rumor stage and it’s receipt had been heralded the first of the week by the fact that a crew of men started work at the dam site.

The news, however, drew headlines and much news time as the word was spread throughout the state that another private hydro-electric project had been given a green light.

This is the largest power development ever undertaken by the Puget Sound Power & Light Co. The total cost is estimated to be \$35 million dollars, part of which will be in installation of another generator at the present Baker power house in Concrete. The new

dam, 8 miles up from the present installation, will develop 85,000 kw and 55,000 kw of capacity will be added at the present plant.

Specifications on the dam itself call for a structure 300 feet high and 200 feet wide at the base, to be constructed of concrete. The dam will be 1,200 feet long and will have a 12 foot roadway across its top.

Behind the dam a reservoir over nine miles long and storing 980 billion gallons of water will be created. North of the dam a 1,260 foot long dike 50 feet high will have to be constructed of earth and rock fill to maintain the lake level at dam height.

The powerhouse will be 120 feet long and 60 feet wide and will be located at the base of the dam in the main channel of the river. Two water wheels of 60,000 h.p. each, operating on an average head of 275 feet, and two generators of 42,500 kilowatts each will furnish the generating capacity.

### **Work Starts Immediately**

Completion of the project is set for 1959, so the company plans to start construction of the camp and roads immediately with hopes of getting into actual pouring of cement by fall.

At peak employment the job is expected to employ 1,500 men. A camp for some 800 will be erected below Koma Kulshan ranger station near the dam site. The town of Concrete is expected to try to absorb the extra men and the families that will come here for the three-year construction period.

Plans for trailer courts and new housing have been under study for the past year. The announcement of start of construction should be the signal for a lot of activity in this field.

One of the biggest booms will be from the logging of the lake basin, which is to be stripped clean.